

SUN PLASTIC AND MEDICAL MATERIAL CO. INDIA

SUN VACUUM BLOOD COLLECTION TUBE (Z NO ADDITIVE)



CODE	SIZE	VOL	ADDITIVE	MATERIAL	PACKING	BOX DIAMENTION	BOX WEIGHT
SVP200AR	13 X 75	2.0	NO Additive	PET	1200PCS/CASE	54*36*19	9 KG
SVP300AR	13 X 75	3.0	NO Additive	PET	1200PCS/CASE	54*36*19	9 KG
SVP400AR	13 X 75	4.0	NO Additive	PET	1200PCS/CASE	54*36*19	9 KG
SVP500BR	13 X 100	5.0	NO Additive	PET	1200PCS/CASE	57*36*24	11KG
SVP600BR	13 X 100	6.0	NO Additive	PET	1200PCS/CASE	57*36*24	11KG
SVP700CR	16 X 100	7.0	NO Additive	PET	1200PCS/CASE	59*36*24	13KG
SVP800CR	16 X 100	8.0	NO Additive	PET	1200PCS/CASE	59*36*24	13 KG
SVP900CR	16 X 100	9.0	NO Additive	PET	1200PCS/CASE	59*36*24	13 KG

A sterile PET plastic tube, sealed with a stopper, containing a pre-measured amount of vacuum with no additive. It is intended to be used for the collection, and preservation and/or transport, of blood for analysis and/or other investigation (e.g., serum chemistry determinations including trace elements, serology, and toxicology). This is a single-use device.

SUN PLASTIC AND MEDICAL MATERIAL CO. IND.

SUN VACUUM BLOOD COLLECTION TUBE (CLOT ACTIVATOR)



CODE	SIZE	VOL	ADDITIVE	MATERIAL	PACKING	BOX DIAMENTION	BOX WEIGHT
SVP200AC	13 X 75	2.0	Clot Activator	PET	1200PCS/CASE	54*36*19	9 KG
SVP300AC	13 X 75	3.0	Clot Activator	PET	1200PCS/CASE	54*36*19	9 KG
SVP400AC	13 X 75	4.0	Clot Activator	PET	1200PCS/CASE	54*36*19	9 KG
SVP500BC	13 X 100	5.0	Clot Activator	PET	1200PCS/CASE	57*36*24	11KG
SVP600BC	13 X 100	6.0	Clot Activator	PET	1200PCS/CASE	57*36*24	11KG
SVP700CC	16 X 100	7.0	Clot Activator	PET	1200PCS/CASE	57*36*24	13KG
SVP800CC	16 X 100	8.0	Clot Activator	PET	1200PCS/CASE	59*36*24	13 KG
SVP900CC	16 X 100	9.0	Clot Activator	PET	1200PCS/CASE	59*36*24	13 KG
SVP100DC	16 X 100	10.0	Clot Activator	PET	1200PCS/CASE	59*36*24	13 KG

A sterile PET plastic tube, sealed with a stopper, containing a pre-measured amount of vacuum and a clot activator. It is intended to be used for the collection, and preservation and/or transport, of blood for analysis and/or other investigation (e.g., serum chemistry determinations). This is a single-use device.

SUN PLASTIC AND MEDICAL MATERIAL CO. IND.

SUN VACUUM BLOOD COLLECTION TUBE (K2-EDTA)



CODE	SIZE	VOL	ADDITIVE	MATERIAL	PACKING	BOX DIAMENT ION	BOX WEIG HT
SVP200A2	13 X 75	2.0	K2 -EDTA	PET	1200PCS/CASE	54*36*19	9 KG
SVP300A2	13 X 75	3.0	K2 -EDTA	PET	1200PCS/CASE	54*36*19	9 KG
SVP400A2	13 X 75	4.0	K2 -EDTA	PET	1200PCS/CASE	54*36*19	9 KG
SVP500B2	13 X 100	5.0	K2 -EDTA	PET	1200PCS/CASE	57*36*24	11 KG
SVP600B2	13 X 100	6.0	K2 -EDTA	PET	1200PCS/CASE	57*36*24	11KG
SVP700C2	16 X 100	7.0	K2 -EDTA	PET	1200PCS/CASE	59*36*24	13 KG
SVP800C2	16 X 100	8.0	K2 -EDTA	PET	1200PCS/CASE	59*36*24	13KG
SVP900C2	16 X 100	9.0	K2 -EDTA	PET	1200PCS/CASE	59*36*24	13 KG

A sterile PET plastic tube, sealed with a stopper, containing a pre-measured amount of vacuum and the anticoagulant dipotassium ethylene diamine tetraacetic acid (K2EDTA). It is intended to be used for the collection, and preservation and/or transport, of blood for analysis and/or other investigation [e.g., blood lead, whole blood haematology such as complete blood count (CBC), molecular diagnostics, and immunohaematology testing (ABO grouping, Rh typing, antibody screening)]. This is a single-use device.

SUN PLASTIC AND MEDICAL MATERIAL CO. IND.

SUN VACUUM BLOOD COLLECTION TUBE (K3- EDTA)



CODE	SIZE	VOL	ADDITIVE	MATERIAL	PACKING	BOX DIAMENTION	BOX WEIGHT
SVP200A3	13 X 75	2.0	K3 -EDTA	PET	1200PCS/CASE	54*36*19	9 KG
SVP300A3	13 X 75	3.0	K3 -EDTA	PET	1200PCS/CASE	54*36*19	9 KG
SVP400A3	13 X 75	4.0	K3 -EDTA	PET	1200PCS/CASE	54*36*19	9 KG
SVP400B3	13 X 100	4.0	K3 -EDTA	PET	1200PCS/CASE	54*36*19	11 KG
SVP500B3	13 X 100	5.0	K3 -EDTA	PET	1200PCS/CASE	57*36*24	11 KG
SVP600B3	13 X 100	6.0	K3 -EDTA	PET	1200PCS/CASE	57*36*24	11KG
SVP700C3	16 X 100	7.0	K3 -EDTA	PET	1200PCS/CASE	59*36*24	13 KG
SVP800C3	16 X 100	8.0	K3 -EDTA	PET	1200PCS/CASE	59*36*24	13KG
SVP900C3	16 X 100	9.0	K3 -EDTA	PET	1200PCS/CASE	59*36*24	13 KG

A sterile PET plastic tube, sealed with a stopper, containing a pre-measured amount of vacuum and the anticoagulant tripotassium ethylene diamine tetraacetic acid (K3EDTA). It is intended to be used for the collection, and preservation and/or transport, of blood for analysis and/or other investigation [e.g., whole blood haematology such as complete blood count (CBC), and quantitative drug assay

Kit

SUN PLASTIC AND MEDICAL MATERIAL CO. IND.

SUN VACUUM BLOOD COLLECTION TUBE LITHIUM HEPARIN



CODE	SIZE	VOL	ADDITIVE	MATERIAL	PACKING	BOX DIAMENTION	BOX WEIGHT
SVP200AL	13 X 75	2.0	Lithium Heparin	PET	1200PCS/CASE	54*36*19	9 KG
SVP300AL	13 X 75	3.0	Lithium Heparin	PET	1200PCS/CASE	54*36*19	9 KG
SVP400AL	13 X 75	4.0	Lithium Heparin	PET	1200PCS/CASE	54*36*19	9 KG
SVP500BL	13 X 100	5.0	Lithium Heparin	PET	1200PCS/CASE	57*36*24	11 KG
SVP600CL	16 X 100	6.0	Lithium Heparin	PET	1200PCS/CASE	59*36*24	13 KG
SVP700CL	16 X 100	7.0	Lithium Heparin	PET	1200PCS/CASE	59*36*24	13 KG
SVP800CL	16 X 100	8.0	Lithium Heparin	PET	1200PCS/CASE	59*36*24	13 KG
SVP900CL	16 X 100	9.0	Lithium Heparin	PET	1200PCS/CASE	59*36*24	13 KG

A sterile PET plastic tube, sealed with a stopper, containing a pre-measured amount of vacuum and the anticoagulant lithium heparin. It is intended to be used for the collection, and preservation and/or transport, of blood for analysis and/or other investigation (e.g., plasma chemistry determinations). This is a single-use device.

SUN PLASTIC AND MEDICAL MATERIAL CO. INDIA

SUN VACUUM BLOOD COLLECTION TUBE (ESR 4NC SODIUM CITRATE 3.8%)



CODE	SIZE	VOL	ADDITIVE	MATERIAL	PACKING	BOX DIMENSION	BOX WEIGHT
SVP160AE	13 X 75	1.6	Sodium citrate (4NC) 3.8%	PET	1200PCS/CASE	54*36*19	9 KG
SVP240AE	13 X 75	2.4	Sodium citrate (4NC) 3.8%	PET	1200PCS/CASE	54*36*19	9 KG
SVG320AE	13 X 75	3.2	Sodium citrate (4NC) 3.8%	PET	1200PCS/CASE	54*36*19	9 KG
SVG400AE	13 X 75	4.0	Sodium citrate (4NC) 3.8%	PET	1200PCS/CASE	54*36*19	9 KG
SVG900CE	16 X 100	9.0	Sodium citrate (4NC) 3.8%	PET	1200PCS/CASE	59*36*24	13 KG

A sterile PET plastic tube, sealed with a stopper, containing a pre-measured amount of vacuum and the blood anticoagulant sodium citrate. It is intended to be used for the collection, and preservation and/or transport, of blood for analysis and/or other investigation (e.g., for plasma coagulation studies, mononuclear cell preparation). This is a single-use device.

SUN PLASTIC AND MEDICAL MATERIAL CO. IND.

SUN VACUUM BLOOD COLLECTION TUBE 9NC SODIUM CITRATE 3.2%



CODE	SIZE	VOL	ADDITIVE	MATERIAL	PACKING	BOX DIAMENSION	BOX WEIGHT
SVP180AB	13 X 75	1.8	Sodium citrate (9NC)	PET	1200PCS/CASE	54*36*19	9 KG
SVP200AB	13 X 75	2.0	Sodium citrate (9NC)	PET	1200PCS/CASE	54*36*19	9 KG
SVP270AB	13 X 75	2.7	Sodium citrate (9NC)	PET	1200PCS/CASE	54*36*19	9 KG
SVG300AB	13 X 75	3.0	Sodium citrate (9NC)	PET	1200PCS/CASE	54*36*19	9 KG
SVG350AB	13 X 75	3.5	Sodium citrate (9NC)	PET	1200PCS/CASE	54*36*19	9 KG
SVG360AB	13 X 75	3.6	Sodium citrate (9NC)	PET	1200PCS/CASE	54*36*19	9 KG
SVG450AB	13 X 75	4.5	Sodium citrate (9NC)	PET	1200PCS/CASE	54*36*19	9 KG

A sterile PET plastic tube, sealed with a stopper, containing a pre-measured amount of vacuum and the blood anticoagulant sodium citrate. It is intended to be used for the collection, and preservation and/or transport, of blood for analysis and/or other investigation (e.g., for plasma coagulation studies, mononuclear cell preparation). This is a single-use device.

SUN PLASTIC AND MEDICAL MATERIAL CO. INDIA

SUN VACUUM BLOOD COLLECTION TUBE FX - FLUORIDE OXALATE (GLUCOSE TUBE)



CODE	SIZE	VOL	ADDITIVE	MATERIAL	PACKING	BOX DIMENSION	BOX WEIGHT
SVP200AG	13 X 75	2.0	FX- FLUORIDE & OXALATE	PET	1200PCS/CASE	54*36*19	9 KG
SVP300AG	13 X 75	3.0	FX- FLUORIDE & OXALATE	PET	1200PCS/CASE	54*36*19	9 KG
SVP400AG	13 X 75	4.0	FX- FLUORIDE & OXALATE	PET	1200PCS/CASE	54*36*19	9 KG
SVP500BG	13 X 100	5.0	FX- FLUORIDE & OXALATE	PET	1200PCS/CASE	57*36*24	11KG
SVP600BG	13 X 100	6.0	FX- FLUORIDE & OXALATE	PET	1200PCS/CASE	57*36*24	11KG
SVP700CG	16 X 100	7.0	FX- FLUORIDE & OXALATE	PET	1200PCS/CASE	59*36*24	13KG
SVP800CG	16 X 100	8.0	FX- FLUORIDE & OXALATE	PET	1200PCS/CASE	59*36*24	13 KG
SVP900CG	16 X 100	9.0	FX- FLUORIDE & OXALATE	PET	1200PCS/CASE	59*36*24	13 KG

A sterile PET plastic tube, sealed with a stopper, containing a pre-measured amount of vacuum, the anticoagulant potassium oxalate and the antiglycolytic agent sodium fluoride. It is intended to be used for the collection, and preservation and/or transport, of blood for analysis and/or other investigation (e.g., blood glucose or lactate determinations). This is a single-use device.

SUN PLASTIC AND MEDICAL MATERIAL CO. INDIA

SUN VACUUM BLOOD COLLECTION TUBE GEL AND CLOT ACTIVATOR



CODE	SIZE	VOL	ADDITIVE	MATERIAL	PACKING	BOX DIMENSION	BOX WEIGHT
SVP300AY	13 X 75	3.0	GEL+ Clot Activator	PET	1200PCS /CASE	54*36*19	10KG
SVP350AY	13 X 75	3.5	GEL+ Clot Activator	PET	1200PCS /CASE	54*36*19	10KG
SVP400BY	13 X 100	4.0	GEL+ Clot Activator	PET	1200PCS /CASE	57*36*24	12.5 KG
SVP500BY	13 X 100	5.0	GEL+ Clot Activator	PET	1200PCS /CASE	57*36*24	12.5 KG
SVP600BY	13 X 100	6.0	GEL+ Clot Activator	PET	1200PCS /CASE	57*36*24	12.5 KG
SVP700CY	16 X 100	7.0	GEL+ Clot Activator	PET	1200PCS /CASE	59*36*24	14.5KG
SVP800CY	16 X 100	8.0	GEL+ Clot Activator	PET	1200PCS /CASE	59*36*24	14.5KG
SVP850CY	16 X 100	8.5	GEL+ Clot Activator	PET	1200PCS /CASE	59*36*24	14.5KG

A sterile PET plastic tube, sealed with a stopper, containing a pre-measured amount of vacuum, a clot activator and a gel to separate serum from cells. It is intended to be used for the collection, and preservation and/or transport, of blood for analysis and/or other investigation (e.g., blood serum chemistry determinations). This is a single-use device.

SUN PLASTIC AND MEDICAL MATERIAL CO. IND.

SUN VACUUM PRP TUBE



CODE	SIZE	VOL	ADDITIVE	MATERIAL	PACKING	BOX DIMENSION	BOX WEIGHT
PRSVP800	16 X 100	8.0	PRP +GEL	GLASS /PET	1200PCS/ CASE	54*36*24	14.5KG

A sterile glass or PET plastic tube, sealed with a stopper, containing a pre-measured amount of vacuum, a PRP and a gel to Platelet-rich plasma (PRP) therapy uses injections of a concentration of a patient's own platelets to accelerate the healing of injured tendons, ligaments, muscles and joints. In this way, PRP injections use each individual patient's own healing system to improve musculoskeletal problems.

SUN PLASTIC AND MEDICAL MATERIAL CO. IND.

SUN MICRO BLOOD COLLECTION TUBE MICOR BLOOD COLLECTION TUBE EDTA-K3



CODE	SIZE	VOL	ADDITIVE	MATERIAL	PACKING	BOX DIAMENTION	BOX WEIGHT
MTS-K305	10 X 48	0.5	K3 -EDTA	P.P.	1000PCS/CASE	54*36*19	6 KG
MTS-K308	10 X 48	0.8	K3 -EDTA	P.P.	1000PCS/CASE	54*36*19	6 KG
MTS-K310	10 X 48	1.0	K3 -EDTA	P.P.	1000PCS/CASE	54*36*19	6 KG

A sterile plastic MICRO tube with screw cap non vacuum anticoagulant tripotassium ethylene diamine tetra acetic acid, It is intended to be used for the collection, and preservation and/or transport, of blood for analysis and/or other investigation (e.g., whole blood hematology such as complete blood count (CBC)& quantitative drug assay,). This is a single-use device

SUN PLASTIC AND MEDICAL MATERIAL CO. IND.

SUN MICRO BLOOD COLLECTION TUBE GEL & CLOT ACTIVATOR



CODE	SIZE	VOL	ADDITIVE	MATERIAL	PACKING	BOX DIAMENT ION	BOX WEIG HT
MTS-CG05	10X 48	0.5	GEL +CLOT	P.P	1000PCS/ CASE	54*36*19	6.0 KG
MTS-CG08	10X 48	0.8	GEL +CLOT	P.P	1000PCS/ CASE	54*36*19	6 .2KG
MTS-CG10	10X 48	1.0	GEL +CLOT	P.P	1000PCS/ CASE	54*36*19	6 .5KG

A sterile plastic MICRO tube with screw cap non vacuum clot activator and a gel to separate serum from cells. It is intended to be used for the collection, and preservation and/or transport, of blood for analysis and/or other investigation (e.g., blood serum chemistry determinations). This is a single-use device.

SUN PLASTIC AND MEDICAL MATERIAL CO. IND.

SUN MICRO BLOOD COLLECTION TUBE CLOT ACTIVATOR



CODE	SIZE	VOL	ADDITIVE	MATERIAL	PACKING	BOX DIAMENT ION	BOX WEIG HT
MTS-CA05	10X 48	0.5	CLOT ACTIVATOR	P.P	1000PCS/ CASE	54*36*19	6 KG
MTS-CA08	10X 48	0.8	CLOT ACTIVATOR	P.P	1000PCS/ CASE	54*36*19	6 KG
MTS-CA10	10X 48	1.0	CLOT ACTIVATOR	P.P	1000PCS/ CASE	54*36*19	6 KG

A sterile plastic MICRO tube with screw cap non vacuum clot activator, It is intended to be used for the collection, and preservation and/or transport, of blood for analysis and/or other investigation (e.g., serum chemistry, determinations). This is a single-use device

SUN PLASTIC AND MEDICAL MATERIAL CO. IND.

SUN MICRO BLOOD COLLECTION TUBE SODIUM CITRATE



CODE	SIZE	VOL	ADDITIVE	MATERIAL	PACKING	BOX DIAMENTION	BOX WEIGHT
MTS-SC05	10X 48	0.5	SODIUM CITRATE 3.2%	P.P	1000PCS /CASE	54*36*19	6 KG
MTS-SC08	10X 48	0.8	SODIUM CITRATE 3.2%	P.P	1000PCS /CASE	54*36*19	6 KG
MTS-SC10	10X 48	1.0	SODIUM CITRATE 3.2%	P.P	1000PCS /CASE	54*36*19	6 KG

A sterile plastic MICRO tube with screw cap non vacuum anticoagulant tri-Sodium citrate. It is intended to be used for the collection, and preservation and/or transport, of blood for analysis and/or other investigation (e.g., plasma coagulation study). This is a single-use device.

SUN PLASTIC AND MEDICAL MATERIAL CO. IND.

SUN SCREW CAP BLOOD COLLECTION TUBE GEL AND CLOT ACTIVATOR

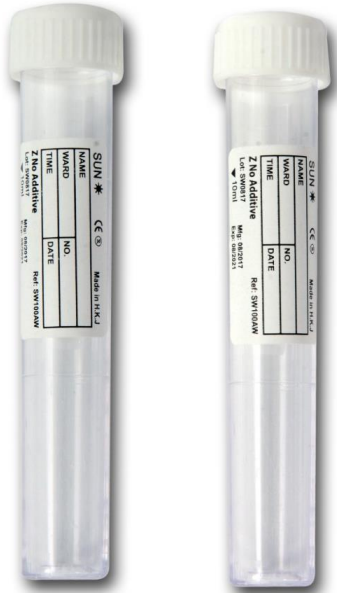


CODE	SIZE	VOL	ADDITIVE	MATERIAL	PACKING	BOX DIMENSION	BOX WEIGHT
SW500	12*75	5.0	GEL+CLOT	P.P	1000PCS/ CASE	54*36*19	7KG
SW100	12*75	10.0	GEL+CLOT	P.P	1000PCS/ CASE	54*36*19	7KG

A sterile plastic tube with screw cap non vacuum GEL & clot activator, It is intended to be used for the collection, and preservation and/or transport, of blood for analysis and/or other investigation (e.g., serum chemistry, determinations). This is a single-use device

SUN PLASTIC AND MEDICAL MATERIAL CO. IND.

SUN VACUTTE BLOOD COLLECTION TUBE NO ADDITIVE PLAIN TUBE



CODE	SIZE	VOL	ADDITIVE	MATERIAL	PACKING	BOX DIAMENSION	BOX WEIGHT
SW500AW	12*75	5.0	NO ADDITIVE	P.P	1000PCS/ CASE	54*36*19	6.5 KG
SW100AW	12*75	10.0	NO ADDITIVE	P.P	1000PCS/ CASE	54*36*19	6.5 KG

A sterile plastic tube with screw cap non vacuum with No additive, It is intended to be used for the collection, and preservation and/or transport, of blood for analysis and/or other investigation (e.g., serum chemistry, determinations including trace elements, serology and toxicology). This is a single-use device

SUN PLASTIC AND MEDICAL MATIRIAL CO. IND ■

SUN SPECIMEN CONTAINER 30ML



CODE	SIZE	VOL	TYPE	MATE RIAL	PACKING	BOX DIAMENTI ON	BOX WEIGHT	STERILITY CONFORMITY
SU30S	90*30mm	30ml	With wrapped ,& blue cap	P.S.	500PCS/ CASE	47*47*36	13.6 KG	WITH WRAPPED STERILE
SU30S	90*30mm	30ml	With wrapped ,& RED cap	P.S.	500PCS/ CASE	47*47*36	13.6KG	WITH WRAPPED STERILE
SS30S	90*30mm	30ml	With attached spoon	P.S.	1000PCS/ CASE	50*50*52	14.6 KG	WITHOUT WRAPPED STERILE & NON STERILE

Urine container or urine collection are specially designed for urine collection and transport of microbiology urinalysis, drug testing and histology specimens, present in term of both urine and stool container. All container are available sterile and non sterile format , this is single use devices

SUN PLASTIC AND MEDICAL MATERIAL CO. INDIA

SUN SPECIMEN CONTAINER 60ML (STERILE /NON STERILE)



CODE	SIZE	TYPE	VOL	MATERIAL	PACKING	BOX DIMENTION	BOX WEIGHT
SU60S	71*36mm	RED CAP	60ml	P.P.	01PCS / POUCH, 500PCS/CASE	47*47*36	7.6 KG
SU60S	71*36mm	BLUE CAP	60ml	P.P.	01PCS / POUCH, 500PCS/CASE	47*47*36	7.6 KG

Urine container or urine collection are specially designed for urine collection and transport of microbiology urinalysis, drug testing and histology specimens, present in term of both urine and stool container. All container are available sterile and non sterile format , this is single use devices

SUN PLASTIC AND MEDICAL MATERIAL CO. IND.

SUN VACUUM URINE CONTAINER



CODE	TUBE SIZE	VOL	ADDITIVE	MATERIAL	PACKING	BOX DIMENTION	BOX WEIGHT
SV120V	12ML	120ML	NO ADDITIVE	PP/PET	250PCS/ CASE	47*47*47/ 59*26*34	10.5KG
WITHOUT TUBE							
SV120	-	120ML	NO ADDITIVE	PP	250PCS/ CASE	47*47*47	7.5KG

Urine container VACUUM TYPE with vacuum tube collection are specially designed for urine collection and transport of microbiology urinalysis, drug testing and histology specimens, present in term of both urine and stool container. All container are available sterile and non sterile format, this is single use devices

SUN PLASTIC AND MEDICAL MATERIAL CO. IND.

SUN SPECIMEN CONTAINER 100ML



CODE	SIZE	VOL	TYPE	MATERIAL	PACKING	BOX DIAMENTI ON	BOX WEIGHT	STERILITY CONFORMITY
SU100S	71*52 mm	100ml	with wrapped ,& red cap	P.P.	500PCS/ CASE	50*50*52	09.6 KG	WITH WRAPPED STERILE
SU100	71*52 mm	100ml	without wrapped ,& yellow cap	P.P.	500PCS/ CASE	50*50*52	09.6KG	NON STERILE
SS100S	71*52 mm	100ml	With attached spoon	P.P.	500PCS/ CASE	50*50*52	10.5 KG	WITHOUT WRAPPED STERILE & NON STERILE

Urine container or urine collection are specially designed for urine collection and transport of microbiology urinalysis, drug testing and histology specimens, present in term of both urine and stool container. All container are available sterile and non sterile format , this is single use devices

SUN PLASTIC AND MEDICAL MATERIAL CO. IND.

SUN TEST TUBES FOR LABORATORY EXPERIMENTATION AND ANALYSIS

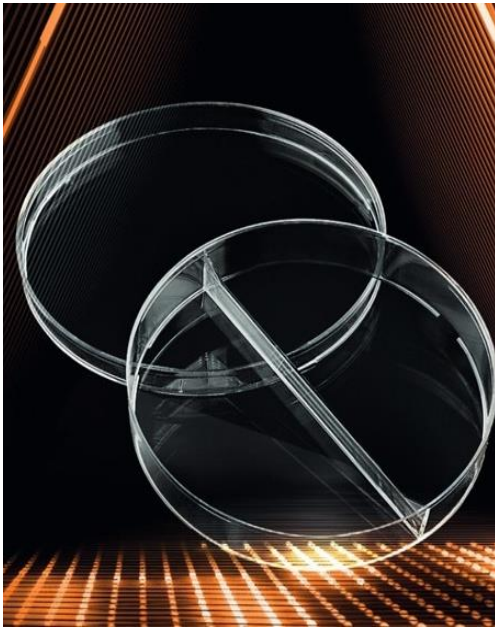


CODE	SIZE	VOL	TYPE	MATERIAL	PACKING	BOX DIMENSION	BOX WEIGHT
STPS12	12*75mm	5 ml	Rimless, round bottom	P.S.	7000 PCS/CASE	50*50*52	19.5 KG
STPP12	12*75mm	5 ml	Rimless, round bottom	P.P.	7000PCS/CASE	50*50*52	13.0 KG
STPS13	13*75 mm	7ml	Rimless, round bottom	P.S.	1200PCS/CASE	50*50*52	13.0 KG
STPP13	13*100 mm	7ml	Rimless, round bottom	P.P.	1200PCS/CASE	50*50*52	13.0 KG
STPS16	16*100 mm	12ml	Rimless, round bottom	P.S.	1200PCS/CASE	50*50*52	
STPP16	16*100 mm	12 ml	Rimless, round bottom	P.P.	1200PCS/CASE	50*50*52	

A cylindrical tube of clear high medical grade polystyrene, usually open at one end and rounded at the other, used as a container for small amounts of a substance in laboratory tests and experiments

SUN PLASTIC AND MEDICAL MATERIAL CO. IND.

SUN PETRI DIESHES

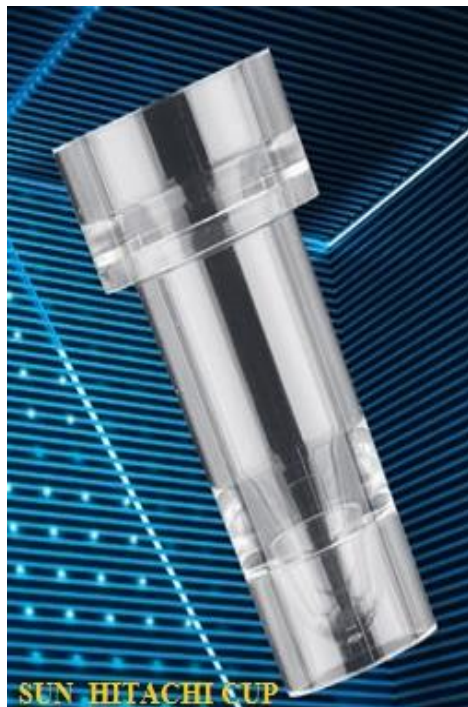


CODE	SIZE	SECTION	MATERIAL	PACKING	BOX DIMENTION	BOX WEIGHT
SPDA1	90*15MM	1 SEC	P.S.	500PCS/CASE	47*47*36	10.5KG
SPDA2	90*15MM	2 SEC	P.S.	500PCS/CASE	47*47*36	12.9KG
SPDA3	90*15MM	3 SEC	P.S.	500PCS/CASE	47*47*36	13.5KG
SPDB3	60*15MM	2 SEC	P.S.	500PCS/CASE	47*47*36	6.5KG

A sterile Petri dishes small, shallow , circular dishes made of thin glass or clear plastic with a loosely fitting, overlapping cover used specially in microbiology for the cultivation of microorganism on solid media it is frequently referred to as a plate This is a single-use device.

SUN PLASTIC AND MEDICAL MATIRIAL CO. IND.

SUN HITACH I CUP



CODE	SIZE	VOL	TYPE	MATE RIAL	PACKING	BOX DIAMENTI ON	BOX WEIGH T
HC02	38*17mm	3 ml	HITACHI TYPE	P.S.	4000 PCS/ CASE	49*29*36	7.85 KG

SUN HITACHI CUP

SUN PLASTIC AND MEDICAL MATERIAL CO. INDIA

SUN PASTEUR PIPETTES



CODE	SIZE	VOL	TYPE	MATERIAL	PACKING	BOX DIMENSION	BOX WEIGHT
STPU3	17 mm	3 ml	GRADUATION MARKING	L.D.P.E.	5000 PCS/CASE	47*47*47	8.5 KG
STPU1	17 mm	1 ml	GRADUATION MARKING	L.D.P.E.	5000 PCS/CASE	47*47*47	8.5 KG

Single use transfer pipettes suitable for the vast majority of liquid handling in the laboratory
The integrated bulb contributes to greater user safety
Our pipettes meet both the requirements of routine work and those of more specific work
The non toxic polyethylene has a low affinity for proteins:- Graduated, Flexible and not-toxic polyethylene,
Available sterile and non sterile